

Release Note - What's New in SP 0

SAP Convergent Charging

Document Version: 1.0 – 2016-01-20

CUSTOMER

SAP Convergent Charging 4.1 SP 0



Typographic Conventions

Type Style	Description
<i>Example</i>	Words or characters quoted from the screen. These include field names, screen titles, pushbuttons labels, menu names, menu paths, and menu options. Textual cross-references to other documents.
Example	Emphasized words or expressions.
EXAMPLE	Technical names of system objects. These include report names, program names, transaction codes, table names, and key concepts of a programming language when they are surrounded by body text, for example, SELECT and INCLUDE.
Example	Output on the screen. This includes file and directory names and their paths, messages, names of variables and parameters, source text, and names of installation, upgrade and database tools.
Example	Exact user entry. These are words or characters that you enter in the system exactly as they appear in the documentation.
<Example>	Variable user entry. Angle brackets indicate that you replace these words and characters with appropriate entries to make entries in the system.
EXAMPLE	Keys on the keyboard, for example, F2 or ENTER .

Document History

The following table provides an overview of the most important document changes:

Version	Date	Description
1.0	January 2015	Initial version

Table of Contents

1	Introduction	5
2	Before You Start.....	7
3	Catalog Object Version Deletion (Changed)	9
3.1	Feature Overview.....	9
3.2	Effect on User Interfaces	9
4	Contract Operational Status Display (Changed)	11
4.1	Feature Overview.....	11
4.2	Effect on User Interfaces	11
5	Mapping Table Extension (Changed).....	13
5.1	Feature Overview.....	13
5.2	Effect on User Interfaces	13
6	Simulation Tool Retirement (New)	14
6.1	Feature Overview.....	14

1 Introduction

Audience

- Solution and technology consultants
- System and application administrators
- SAP sales representatives

About this Document

This *Release Note - What's New* documentation lists all the features introduced in SAP Convergent Charging 4.1 SP 0.

What's New in SAP CC 4.1

The major release SAP CC 4.1 provides the following features in your SAP system landscape:

- [Catalog Object Version Deletion](#)
- [Contract Operational Status Display](#)
- [Mapping Table Extension](#)
- [Simulation Tool Retirement](#)

Section "What's New" in SAP CC Guides

For more details about the new features of SAP CC 4.1 SP 0, see the section *What's New* in the guides of SAP Convergent Charging 4.1.

Abbreviations

The table below shows the list of abbreviations used throughout this document.

Abbreviation	Meaning
BRIM	Billing Revenue and Innovation Management
CC	Convergent Charging
CMA	Customer Management Area
CRM	Customer Relationship Management

Abbreviation	Meaning
ERP	Enterprise Resource Planning
GUI	Graphical User Interface
JCo	Java Connector
WS	Web Services

2 Before You Start

SAP BRIM Solution

SAP CC 4.1 is part of the *SAP Billing and Revenue Innovation Management (BRIM) Solution* with the SAP ERP and SAP CRM components of SAP Business Suite 7 Innovations 2016.

Depending on your *SAP Industry*, you consider the following ERP applications:

- Cross Industries: SAP ERP/FI-CA (Contract Accounts Receivable and Payable)
- SAP for Telecommunications: SAP ERP/RM-CA (Contract Accts. Rec./Payable for Telecommunications)
- SAP for Utilities: SAP ERP/Contract Accts Receivable and Payable for the Utilities Industry

SAP Help Portal

SAP Help Portal is the central place to access *SAP user assistance*. Find the documentation of SAP Convergent Charging at: <http://help.sap.com/cc41>.

Important SAP Notes

In the following table, the *SAP Notes* contain information for delivering and implementing SAP CC 4.1 SP 0:

Title	SAP Note	Description
<i>Release and Information Note for SAP Convergent Charging 4.1 SP 0</i>	2226403	This Release and Information Note (RIN) contains information and references to documents or notes to install the initial shipment stack of SAP CC 4.1.
<i>Release Restriction Note for SAP Convergent Charging 4.1 SP 0</i>	2249339	This Release Restriction Note provides information about release restrictions for the initial shipment stack of SAP CC 4.1.

In the following table, the *SAP Notes* contain information for installing the initial shipment and the previous support packages of SAP CC 4.0:

Title	SAP Note	Description
<i>Release and Information Note for SAP Convergent Charging 4.0</i>	1856154	This Release and Information Note (RIN) contains information and references to documents or notes to install the initial shipment stack of SAP CC 4.0.

Title	SAP Note	Description
<i>Release Restriction Note for SAP Convergent Charging 4.0</i>	1856159	This Release Restriction Note provides information about release restrictions for the initial shipment stack of SAP CC 4.0.

Additional Information

For more information about specific topics, see the quick links in the following table:

Content	Link on SAP Help Portal or on Support Portal
SAP Convergent Charging (Customers and Partners)	http://help.sap.com/cc41
SAP Billing and Revenue Innovation Management Solution	http://service.sap.com/BRIM
Related SAP Notes	http://support.sap.com/notes
Product Availability Matrix	http://support.sap.com/pam
SAP Solution Manager	http://support.sap.com/solutionmanager

3 Catalog Object Version Deletion (Changed)

3.1 Feature Overview

As of SP 0, the graphical user interface of SAP Convergent Charging is enhanced for deleting the versions of a catalog object.

Summary

In SAP CC Core Tool, you can now delete the versions of a catalog object. After opening a catalog object, you switch from the *Display Mode* to the *Edit Mode*, and then you can delete the versions of the catalog object.

Benefits

This enhancement simplifies the deletion of unnecessary versions for your production system.

More Information

See *SAP CC Core Tool Primary Help* for more information about this feature.

3.2 Effect on User Interfaces

Changes in SAP CC Core Tool

You can now delete the versions of a catalog object through the *Action* menu (figure 1) when the object window is open and in *Edit Mode*:

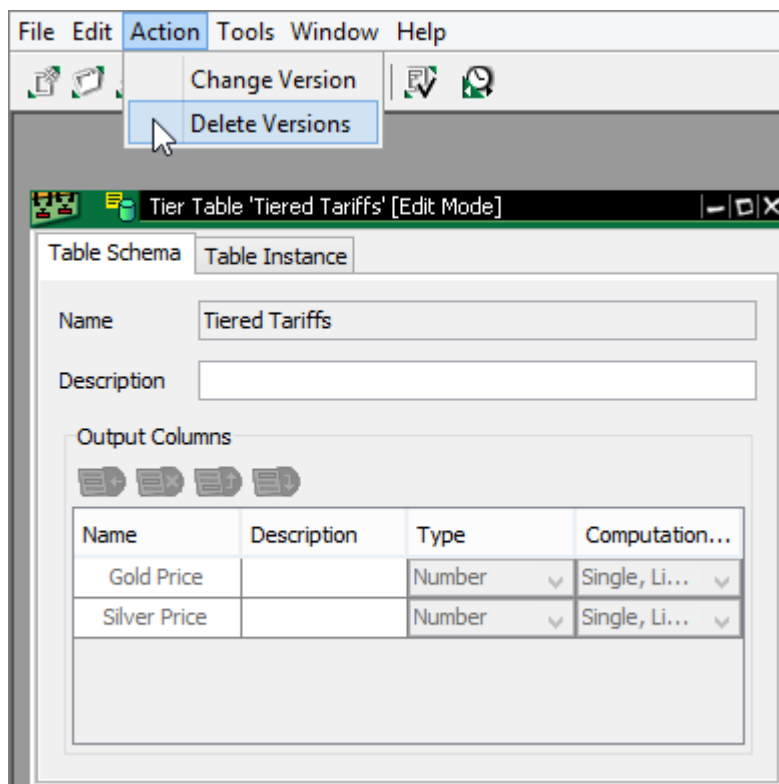


Figure 1: The [Action](#) menu for deleting the versions of a catalog object

4 Contract Operational Status Display (Changed)

4.1 Feature Overview

As of SP 0, the graphical user interface of SAP Convergent Charging is enhanced to display the operational status of a provider contract.

Summary

SAP Convergent Charging allows you to manage an operational status for each provider contract when transferring provider contracts from a SAP Convergent system to another.

In SAP CC Core Tool, you can now view the status value of a provider contract:

- Active: The provider contract is fully operational
- Locked: The provider contract is temporarily locked and the processes related to the provider contract are not available
- Closed: The provider contract is no longer operational and is deactivated

Benefits

This enhancement allows you to verify if the status of a provider contract is active or not in a SAP CC system.

More Information

See *SAP CC Core Tool Primary Help* for more information about this feature.

4.2 Effect on User Interfaces

Changes in SAP CC Core Tool

You can now view the *Operational Status* field in the *Definition* tab of a provider contract:

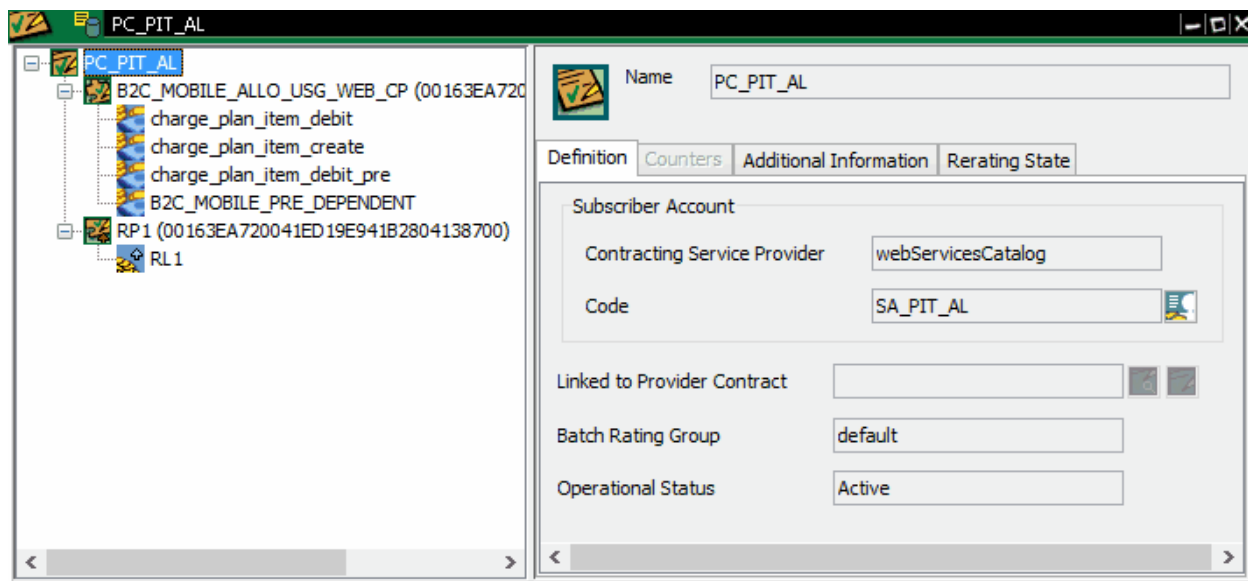


Figure 1: The *Operational Status* field in the *Definition* tab of a provider contract

5 Mapping Table Extension (Changed)

5.1 Feature Overview

As of SP 0, SAP Convergent Charging allows you to create up to 20 input columns and 30 output columns in a mapping table.

Benefits

This enhancement allows you to deal with large tariff tables.

More information

See *SAP CC Core Tool Primary Help* for more information about this feature.

5.2 Effect on User Interfaces

Changes in SAP CC Core Tool

You can now create and view a mapping table with 20 input columns and 30 output columns.

6 Simulation Tool Retirement (New)

6.1 Feature Overview

As of SP 0, Simulation Tool is retired in favor of SAP Convergent Pricing Simulation.

Summary

Simulation Tool is no more part of the software components of SAP Convergent Charging. You can now use SAP Convergent Pricing Simulation that allows to:

- Test the effects of pricing on revenue and costs
- Optimize pricing conditions for customer segments
- Predict the impact of pricing changes on customer trends

More information

Consult http://help.sap.com/hana_psi for more information on SAP Convergent Pricing Simulation.



www.sap.com/contactsap

© 2016 SAP SE or an SAP affiliate company. All rights reserved.
No part of this publication may be reproduced or transmitted in any form or for any purpose without the express permission of SAP SE or an SAP affiliate company.
SAP and other SAP products and services mentioned herein as well as their respective logos are trademarks or registered trademarks of SAP SE (or an SAP affiliate company) in Germany and other countries. All other product and service names mentioned are the trademarks of their respective companies. Please see <http://www.sap.com/corporate-en/legal/copyright/index.epx#trademark> for additional trademark information and notices.