

Master Guide



Collaboration Folders (cFolders) 4.5 using SAP NetWeaver 7.0

Document Version 2.00 – July 2013

SAP AG
 Dietmar-Hopp-Allee 16
 69190 Walldorf
 Germany
 T +49/18 05/34 34 24
 F +49/18 05/34 34 20
www.sap.com

Copyright

© Copyright 2013 SAP AG. All rights reserved

SAP Library document classification: PUBLIC

No part of this publication may be reproduced or transmitted in any form or for any purpose without the express permission of SAP AG. The information contained herein may be changed without prior notice. Some software products marketed by SAP AG and its distributors contain proprietary software components of other software vendors. Microsoft, Windows, Excel, Outlook, PowerPoint, Silverlight, and Visual Studio are registered trademarks of Microsoft Corporation. IBM, DB2, DB2 Universal Database, System i, System i5, System p, System p5, System x, System z, System z10, z10, z/VM, z/OS, OS/390, zEnterprise, PowerVM, Power Architecture, Power Systems, POWER7, POWER6+, POWER6, POWER, PowerHA, pureScale, PowerPC, BladeCenter, System Storage, Storwize, XIV, GPFS, HACMP, RETAIN, DB2 Connect, RACF, Redbooks, OS/2, AIX, Intelligent Miner, WebSphere, Tivoli, Informix, and Smarter Planet are trademarks or registered trademarks of IBM Corporation. Linux is the registered trademark of Linus Torvalds in the United States and other countries. Adobe, the Adobe logo, Acrobat, PostScript, and Reader are trademarks or registered trademarks of Adobe Systems Incorporated in the United States and other countries. Oracle and Java are registered trademarks of Oracle and its affiliates. UNIX, X/Open, OSF/1, and Motif are registered trademarks of the Open Group. Citrix, ICA, Program Neighborhood, MetaFrame, WinFrame, VideoFrame, and MultiWin are trademarks or registered trademarks of Citrix Systems Inc. HTML, XML, XHTML, and W3C are trademarks or registered trademarks of W3C®, World Wide Web Consortium, Massachusetts Institute of Technology. Apple, App Store, iBooks, iPad, iPhone, iPhoto, iPod, iTunes, Multi-Touch, Objective-C, Retina, Safari, Siri, and Xcode are trademarks or registered trademarks of Apple Inc. IOS is a registered trademark of Cisco Systems Inc. RIM, BlackBerry, BBM, BlackBerry Curve, BlackBerry Bold, BlackBerry Pearl, BlackBerry Torch, BlackBerry Storm, BlackBerry Storm2, BlackBerry PlayBook, and BlackBerry App World are trademarks or registered trademarks of Research in Motion Limited. Google App Engine, Google Apps, Google Checkout, Google Data API, Google Maps, Google Mobile Ads, Google Mobile Updater, Google Mobile, Google Store, Google Sync, Google Updater, Google Voice, Google Mail, Gmail, YouTube, Dalvik and Android are trademarks or registered trademarks of Google Inc. INTERMEC is a registered trademark of Intermec Technologies Corporation. Wi-Fi is a registered trademark of Wi-Fi Alliance. Bluetooth is a

registered trademark of Bluetooth SIG Inc. Motorola is a registered trademark of Motorola Trademark Holdings LLC. Computop is a registered trademark of Computop Wirtschaftsinformatik GmbH. SAP, R/3, SAP NetWeaver, Duet, PartnerEdge, ByDesign, SAP BusinessObjects Explorer, StreamWork, SAP HANA, and other SAP products and services mentioned herein as well as their respective logos are trademarks or registered trademarks of SAP AG in Germany and other countries. Business Objects and the Business Objects logo, BusinessObjects, Crystal Reports, Crystal Decisions, Web Intelligence, Xcelsius, and other Business Objects products and services mentioned herein as well as their respective logos are trademarks or registered trademarks of Business Objects Software Ltd. Business Objects is an SAP company. Sybase and Adaptive Server, iAnywhere, Sybase 365, SQL Anywhere, and other Sybase products and services mentioned herein as well as their respective logos are trademarks or registered trademarks of Sybase Inc. Sybase is an SAP company. Crossgate, m@gic EDDY, B2B 360°, and B2B 360° Services are registered trademarks of Crossgate AG in Germany and other countries. Crossgate is an SAP company. All other product and service names mentioned are the trademarks of their respective companies. Data contained in this document serves informational purposes only. National product specifications may vary. These materials are subject to change without notice. These materials are provided by SAP AG and its affiliated companies ("SAP Group") for informational purposes only, without representation or warranty of any kind, and SAP Group shall not be liable for errors or omissions with respect to the materials. The only warranties for SAP Group products and services are those that are set forth in the express warranty statements accompanying such products and services, if any. Nothing herein should be construed as constituting an additional warranty.

Disclaimer

Some components of this product are based on Java™. Any code change in these components may cause unpredictable and severe malfunctions and is therefore expressly prohibited, as is any decompilation of these components.

Any Java™ Source Code delivered with this product is only to be used by SAP's Support Services and may not be modified or altered in any way.

Documentation in the SAP Service Marketplace






You can find this documentation at the following Internet address:

service.sap.com/instguides

Typographic Conventions

Type Style	Represents
<i>Example Text</i>	Words or characters quoted from the screen. These include field names, screen titles, pushbuttons labels, menu names, menu paths, and menu options.
Example text	Emphasized words or phrases in body text, graphic titles, and table titles.
EXAMPLE TEXT	Technical names of system objects. These include report names, program names, transaction codes, table names, and key concepts of a programming language when they are surrounded by body text, for example, SELECT and INCLUDE.
Example text	Output on the screen. This includes file and directory names and their paths, messages, names of variables and parameters, source text, and names of installation, upgrade and database tools.
Example text	Exact user entry. These are words or characters that you enter in the system exactly as they appear in the documentation.
<Example text>	Variable user entry. Angle brackets indicate that you replace these words and characters with appropriate entries to make entries in the system.
EXAMPLE TEXT	Keys on the keyboard, for example, F2 or ENTER.

Icons

Icon	Meaning
	Caution
	Example
	Note
	Recommendation
	Syntax

Contents

GETTING STARTED.....	2
The Main SAP Documentation Types	3
Cross-Phase Documentation	4
Implementation.....	5
Production Operation	5
Upgrade.....	6
Related Information	7
SAP Service Marketplace Links	7
SAP Solution Manager	8
Checking Integration Features and Restrictions	8
Important SAP Notes.....	8
History of Changes.....	9
CFOLDERS OVERVIEW	10
Software Component Matrix.....	10
Minimal System Landscape	12
Additional Technology.....	12
cFolders Application	12
Overview	12
Business Processes in Collaboration Folders.....	13
Technical System Landscape	13
Implementation Sequence	15
Installation Variant A.....	15
Mandatory Components	15
Optional Components.....	15
Installation Steps	17
Installation Variant B.....	18
Mandatory Components	18
Optional Components.....	18
Installation Steps	20
Configuration	20
Upgrade.....	20
SOFTWARE COMPONENTS OVERVIEW.....	20
SAP Components.....	20
Application Components	20
SAP NetWeaver Portal	20
Knowledge Management	22
SAP Business Intelligence (BI).....	22
SAP ECC Instance	22
Technology Components	23
SAP NetWeaver 7.0.....	23
OLTP SAP System	23



Instance SAP NW-KW Content Server..... 23

REFERENCES 23

Collaboration Folders (cFolders)

Collaboration Folders powered by SAP NetWeaver™

Getting Started

This document provides a central starting point for the technical implementation of cFolders, and contains all activities for installation and configuration.



In **higher versions** of software component CPRXRPM (500_702 and higher), the application cFolders remains **unchanged**, i.e. there is no new functionality regarding cFolders. Therefore the information about cFolders given within this guide for CPRXRPM 450_700 **remains valid** similarly for the higher software component versions.

However be aware that **in case of higher versions** of CPRXRPM **some information** regarding CPRXRPM (e.g. SAP Notes) and/or required versions of related products or components (e.g. SAP NetWeaver) might be **changed**.

For that information, see the guides for the SAP Portfolio and Project Management release that is based on the **respective** CPRXRPM version (e.g. SAP Portfolio and Project Management 6.0 in case of software component version CPRXRPM 600_740).

cFolders consists of the following applications and business processes:

Application	Business Process
cFolders	Development Collaboration
	Engineering Change Collaboration

To facilitate the implementation and upgrade process, all information in this document is ordered by application. You can find all the information that is relevant for the technical implementation of a specific application in the respective section. Upgrade information for these applications is available in the *Upgrade Master Guide* for this application (available on *SAP Service Marketplace* at service.sap.com/instguides).

This Master Guide provides information about which components and guides are required during this process.

- *Getting Started* [page 2] contains valuable information about using this document and related information (documentation and SAP Notes) crucial to the installation and upgrade.
- *cFolders Overview* [page 10] contains the following information:
 - A short introduction to cFolders
 - The software component matrix that provides information about which application uses which component and whether the corresponding component is mandatory or optional.
 - Minimal system landscape
- *cFolders Application* [page 12] contains the following information for cFolders:
 - An overview of the application
 - Examples of how the different components interact, and what protocols and interfaces are used, including technical infrastructure examples. Depending on

- the actual business processes that have to be implemented and other aspects (such as security or performance), the real infrastructure might be different.
- Information about the overall installation sequence and the subsequent steps
- References to related installation and configuration guides
- Information about mutual dependencies that affect two or more components
- *Software Component Overview* [page 20] contains a short description of every software component that is part of cFolders.
- Depending on the specific application and the number of processes to be implemented, many different sources for installation and configuration information are required during the implementation process. In *References* [page 44], you can find an overview of all required documentation referenced in this Master Guide.



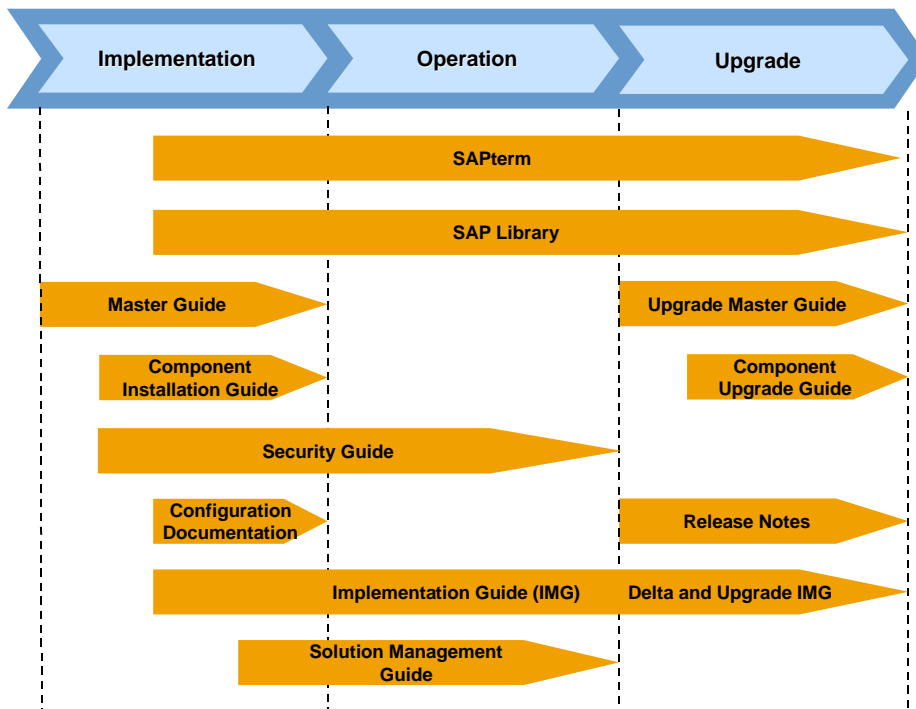
You can find the most current information about the technical implementation of cFolders and the latest installation guides on SAP Service Marketplace at service.sap.com/instguides.

SAP strongly recommends that you use the documents available here. The guides are regularly updated.

The Main SAP Documentation Types

The following is an overview of the most important documentation types that you need in the various phases in the lifecycle of an SAP solution.

Documentation Types in the Software Lifecycle



Cross-Phase Documentation

SAPterm

SAPterm is SAP's terminology database. It contains SAP-specific vocabulary in over 30 languages, as well as many definitions and glossary entries in English and German.

- Target group:
 - Relevant for all target groups
- Current version:
 - Located on the SAP Service Marketplace at service.sap.com/sapterm

SAP Library

The SAP Library is a collection of function- and process-oriented documentation for SAP components. The SAP Library also contains the Business Process Descriptions.

- Target group:
 - Consultants
 - System administrators
 - Project teams for implementations or upgrades
- Current version:
 - Located on the SAP Help Portal at help.sap.com

Implementation Guide (IMG)

The Implementation Guide is a tool for configuring the SAP system to meet customer requirements. Its structure and documentation are component-oriented.

- Target group:
 - Solution consultants
 - Project teams for implementations or upgrades
- Current version:
 - In the SAP menu of the SAP system under *Tools* → *Customizing* → *IMG*

Security Guide

The Security Guide describes the settings for a medium security level and offers suggestions for raising security levels. A collective Security Guide is available for the SAP NetWeaver technologies like SAP Web Application Server (SAP Web AS). This document contains general guidelines and suggestions about system security. Other technologies and individual applications have a Security Guide of their own.

- Target group:
 - Technology consultants
 - Solution consultants
 - Project teams for implementations or upgrades
- Current version:
 - Located on the SAP Service Marketplace at service.sap.com/securityguide

Implementation

Master Guide

The Master Guide is the starting point for implementing an SAP solution. It lists the required SAP components and third party applications that are required for each application. It provides application-specific descriptions of preparation, execution, and follow-up of an implementation. It also offers references to other documents, such as Component Installation Guides and SAP Notes.

- Target group:
 - Technology consultants
 - System administrators
 - Project teams for implementations
- Current version:

Located on the SAP Service Marketplace at service.sap.com/instguides

Component Installation Guide

The Component Installation Guide describes the technical implementation of an SAP component, taking into account the combinations of operating systems and databases. It does not describe any business-related configuration.

- Target group:
 - Technology consultants
 - Project teams for implementations
- Current version:

Located on the SAP Service Marketplace at service.sap.com/instguides

Configuration Documentation in SAP Solution Manager

SAP Solution Manager is a tool with various functions. One of its main functions is the configuration of SAP solutions and Business Scenarios. It contains IMG activities, transactions, and so on, as well as documentation. Instead of the configuration documentation in SAP Solution Manager, there may be separate Business Scenario Configuration Guides on the SAP Service Marketplace for earlier shipments.

- Target group:
 - Solution consultants
 - Project teams for implementations
- Current version:
 - In SAP Solution Manager
 - Located on the SAP Service Marketplace at service.sap.com/ibc

Production Operation

Solution Operations Guide

The Solution Operations Guide is the starting point for operating an SAP solution. The guide refers users to the tools and documentation that they need to carry out various tasks, such as monitoring, backup/restore, master data maintenance, transports, and tests. It also refers users to other documents, for example the SAP Library, the Master Guide, and the Component Management Guides.

- Target group:
 - System administrators
 - Technology consultants
 - Solution consultants
 - Project teams for implementations or upgrades
- Current version:
Located on the SAP Service Marketplace at service.sap.com/instguides

Upgrade

Upgrade Master Guide

The Upgrade Master Guide is the starting point for upgrading the Business Scenarios of an SAP solution. It provides scenario-specific descriptions of preparation, execution, and follow-up of an upgrade. It also refers to other documents, such as the Component Upgrade Guides and SAP Notes. Instead of an Upgrade Master Guide, there may be several Business Scenario Upgrade Guides or a Solution Upgrade Guide for earlier shipments of the Business Scenarios of an SAP solution.

- Target group:
 - Technology consultants
 - Project teams for upgrades
- Current version:
Located on the SAP Service Marketplace at service.sap.com/instguides

Component Upgrade Guide

The Component Upgrade Guide describes the technical upgrade of an SAP component, taking into account the combinations of operating systems and databases. It does not describe any business-related configuration.

- Target group:
 - Technology consultants
 - Project teams for upgrades
- Current version:
Located on the SAP Service Marketplace at service.sap.com/instguides

Release Notes

Release Notes are documents that contain short descriptions of new features or changes in an SAP component since the previous release. Release Notes about ABAP developments enable the SAP system to generate delta and upgrade IMGs.

- Target group:
 - Consultants
 - Project teams for upgrades
- Current version:
 - Located on the SAP Service Marketplace at service.sap.com/releasenotes
 - In the SAP menu of the SAP system under *Help* → *Release information*

Related Information

SAP Service Marketplace Links

The following list contains links to crucial information on the *SAP Service Marketplace* for implementing Collaboration Folders 4.5.

Description	Quick Link
Product availability matrix	pam
Released platforms	platforms
System sizing	sizing
Installation documentation	instguides
Security information for SAP applications	security
Security Guide	securityguide
SAP Notes	notes
Technical system infrastructure	ti
Network integration	network

List of Related Documentation

Content	Location
Security Guide	SAP Service Marketplace at service.sap.com/securityguide
Component Installation Note: cProject Suite	SAP Note 1075655
Component Upgrade Note: cProject Suite	SAP Note 1075658
Upgrade Master Guide: cFolders	SAP Service Marketplace at service.sap.com/instguides
ERP Master Guide	SAP Service Marketplace at service.sap.com/instguides
ERP Application Operations Guide	SAP Service Marketplace at service.sap.com/instguides

To create customer messages in OSS, use the following support components:

Components

Software Component	Support Component
SAP NetWeaver Application Server	BC-JAS
SAP Business Connector	BC-MID-BUS
SAP Content Server	BC-SRV-KPR-CMS
Design Collaboration with cFolders	PLM-CFO

<i>Business Package Design Collaboration</i>	EP PCT PLM DCC
--	----------------

Integrated Business Content (IBC)

The Integrated Business Content knowledge portal offers scenario-based access to generic descriptions, collaborative business maps, and best practices for *SAP Product Lifecycle Management* and *SAP Enterprise Resource Planning*.



You can find comprehensive information about Integrated Business Content for *SAP Product Lifecycle Management* on *SAP Service Marketplace* at service.sap.com/ibc

SAP Solution Manager

SAP Solution Manager efficiently supports the implementation of your solution. Using SAP Solution Manager significantly accelerates the implementation process and helps you to achieve your business goals. At the same time, SAP can deliver support services based on the business scenarios designed and documented in SAP Solution Manager. Implementation content for your solution may further accelerate the implementation process. For information about availability of content specifically tailored to your solution, see SAP Service Marketplace at service.sap.com/solutionmanager.

Checking Integration Features and Restrictions

Integration Features and Restrictions is a central tool which provides you with information on available features and restrictions in cross-combination of software releases or software components.

Checking planned combinations of software releases or components beforehand makes upgrade projects easier and more effective.

In addition, the information may also affect your decisions or plans for special combinations of "older" SAP R/3 releases with "newer" SAP products.

You can access the tool on the SAP Service Marketplace at service.sap.com/ifr.

Important SAP Notes

Read the SAP Installation Notes before you start the installation. These SAP notes contain the most recent information on the installation, as well as corrections to the installation documentation.

Make sure that you have the up-to-date version of each SAP note, which you can find on the SAP Service Marketplace at service.sap.com/notes.

List of Related SAP Notes for Collaboration Folders 4.5:

SAP Note Number	Title	Description
1075655	Installation of CPRXRPM 450_700 on Basis Release 700	This note describes how to install the ABAP add-on component CPRXRPM 450_700 on SAP NetWeaver 7.0.
1075658	Upgrade of SAP Basis Release 700 with CPRXRPM 450_700	This note describes how to upgrade the ABAP add-on component CPRXRPM 450_700 to run on SAP

		NetWeaver 7.0.
1084384	CPRXRPM: Support Packages	This note contains information about support packages for the component CPRXRPM.
427215	Overview: Notes on cFolders and cProjects	This note contains an overview of all SAP notes for cFolders, Project Management, and Portfolio Management.

History of Changes

The Master Guide is regularly updated on SAP Service Marketplace at service.sap.com/instguides.



Make sure you have the latest version of the Master Guide by checking SAP Service Marketplace immediately before starting the installation.

The following table provides an overview on the most important changes that were made in the latest versions.

Master Guide Version	Important Changes
1.00	Initial Version
2.00	Validity extended for subsequent CPRXRPM versions (chapter Getting Started)

cFolders Overview

The technical implementation depends on the system landscape and in particular on the security policy of your enterprise.

For cFolders, SAP supports the following installation variants:

- Installation of cFolders on the intranet
Choose this installation if you want to use cFolders applications for internal collaboration only. All participants in the collaboration must have access to the company's internal network within the firewall.
- Installation of cFolders outside the intranet
Choose this scenario if you want cFolders applications to be primarily available to external collaboration partners.
SAP highly recommends this scenario.



In addition to a stand-alone installation on SAP NetWeaver, the following installation variants are possible:

- cFolders 4.5 can be installed on SRM Server 7.0. and SAP SCM Server 7.0.
In this case, cFolders should be called from outside the intranet via the SAP Web dispatcher installed in the demilitarized zone (DMZ).
- cFolders 4.5 is also released for installation on SAP ECC 6.0.

For more information, see the Master Guide for SAP ERP 6.0 on SAP Service Marketplace at service.sap.com/erp-inst → SAP ERP 6.0.

Software Component Matrix

This section provides information about which components are used by cFolders and specifies the minimum release of each component.

Software Component	Collaboration Folders (cFolders)
CPRXRPM (ABAP component for cProjects, cFolders, and SAP RPM)	X
SAP NetWeaver 7.0 SP Stack 13	X SAP NetWeaver with usage types AS-ABAP Optional: EP usage
SAP GUI	X 7.00
SAP Content Server	(X) Must correspond to interface version

	0046
SAP Business Information (BI) Content	(X) SAP NW 7.0 BI Content 7.0.3 SP06 or higher (optional, but required if using SAP BI)
SAP R/3 or ECC	(X) 4.6B or higher */**
SRM Server	(X) 7.0
SCM Server	(X) 7.0
ECL Viewer	(X) 6.0 (To be installed on each front end, if required)
Text Retrieval and Information Extraction (TREX)	(X) 7.0
SAP NetWeaver Portal Drive (for integration with WebDAV)	(x) 4.4
Microsoft Internet Explorer	X 6.0 SP02 and 7.0
Business Package for Design Collaboration (PPMDC)	(X) 4.5

System Requirements for Transactions CFI01 and CFE01 (Documents Only):

- SAP R/3 4.6C or a higher back-end system

System Requirements for Transactions CFI02 and CFE02 (Documents, Materials, and Bills of Material):

- SAP R/3 Release 4.6C SP33 or a higher back-end system and SAP Note 546617
- SAP R/3 Plug-In 2002.2

System Requirements for Transactions CFI03 and CFE03 (Documents, Materials, Bills of Material, and IPPE Objects):

- SAP IS-ERP 2005



Some functions, such as the Reference Designator or BAdI CFX_BI_EXPORT, are only available as of PI 2004.1.

For more information about the Reference Designator, see SAP Notes 844461 and 817588, which are available as of 4.70.

SAP recommends that you use transactions CFI01 and CFE01 only if your system does not fulfill the requirements for transactions CFI02 and CFE02.



If you use a popup blocker, make sure that it is configured to allow popups from your cFolders system, for example <server>.<your company>.com. Otherwise, the system cannot close your session automatically when you leave the application visiting another site or closing your browser. As a result, you may lock projects, even though you have already left the application.

Minimal System Landscape



SAP strongly recommends that you use a minimal system landscape for test and demo purposes only. For performance, scalability, high availability, and security reasons, do not use a minimal system landscape as your productive landscape. For information about creating productive system landscapes, see SAP Service Marketplace at service.sap.com/ti.

Additional Technology

WebDAV Interface

cFolders offers a Web-Based Distributed Authoring and Versioning interface (WebDAV interface) that enables you to connect to different document management repositories, such as SAP Knowledge Management. SAP NetWeaver provides a standard WebDAV client (SAP NetWeaver Portal Drive), which emulates a new hard drive mapped to cFolders structures. This technology is available since cFolders 4.0.

cFolders Application

For this business application, the following topics are covered:

- Overview
- Technical system landscape
- Implementation sequence

Overview

cFolders is an Internet-based collaboration application in SAP PLM. This collaboration platform enables you to collaborate with external business partners in virtual teams to optimize cross-enterprise processes. It allows you to efficiently share and exchange structured and unstructured information, such as bills of material and other kinds of documents with internal team members, external partners, and suppliers.

cFolders supports two different scenarios for this purpose:

- Collaborative scenario – for example, for internal team members and external partners
- Competitive scenario – for example, for use as a supplier's bidding room

In addition, the tight integration of cFolders in *cProjects 4.5* connects in-house project management capabilities to secure external collaboration.

Business Processes in Collaboration Folders

cFolders 4.5 offers the following business processes:

- **Development Collaboration**

You can use this business process to optimize development collaboration with internal and external teams, taking into account technical purchasing.

This is achieved by:

- Consistent central storage of all relevant data throughout the collaboration process
- Secure integration of external partner and supplier data

As you outsource more and more of your production, effective cooperation between development partners and suppliers is an important factor for economic success.

- **Engineering Change Collaboration**

You can use this business process to include external manufacturing or design partners in engineering change processes. Historically, engineering change management only encompassed inhouse processing, from the initial engineering change request (ECR) to the implementation of the engineering change order (ECO). This process allows for the inclusion of external partners in different stages of the process, for example in the request, approval, or implementation phase.

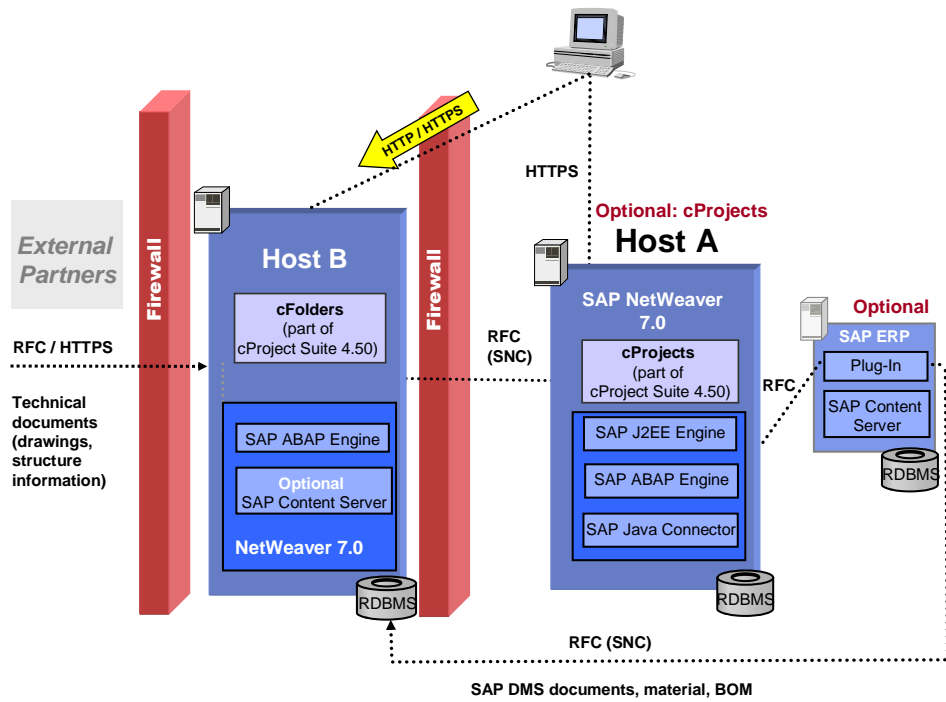
Technical System Landscape

The following graphics provide an overview of the technical infrastructure of *Design Collaboration (cFolders)*.



For more information about the use of cFolders in an extranet scenario, see the *PPIM Security Guide*.

Variant A

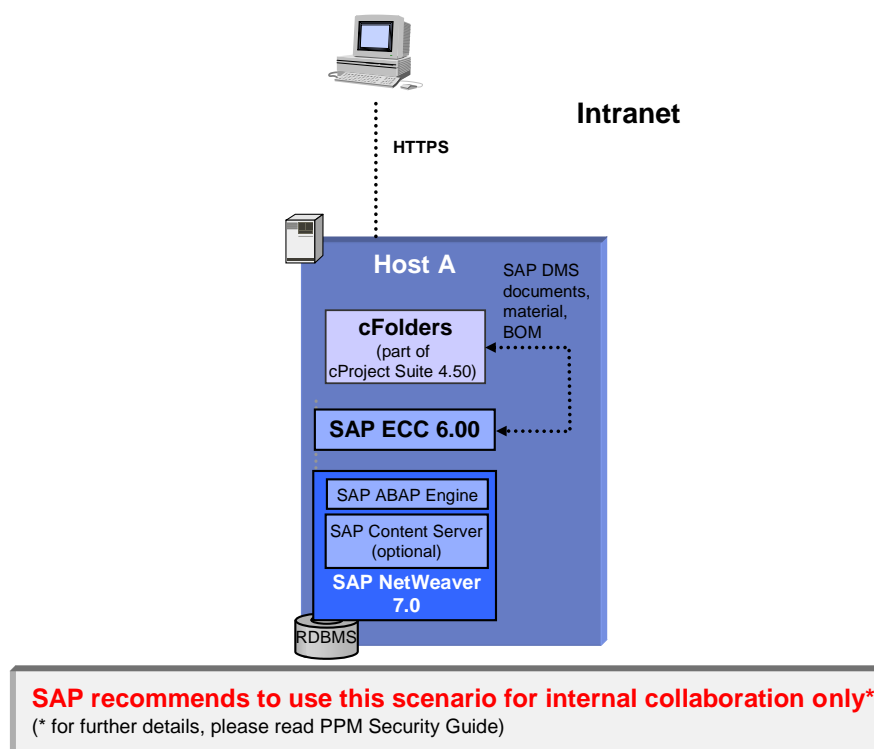


Variant B

In addition, you can run cFolders 4.50 on SAP ECC 6.00.



For more information about the use of cFolders in an extranet scenario, see the *PPIM Security Guide*.



Implementation Sequence

This section lists the sequence of steps (installation, technical configuration, and application configuration) required to implement the business application.

Installation Variant A

Mandatory Components

SAP NetWeaver 7.0

cFolders is installed as an add-on on SAP NetWeaver 7.0.



Do not install SAP NetWeaver 7.0 on Windows NT 4.0. For more information about the released platforms, see *SAP Service Marketplace* at service.sap.com/platforms.

cFolders

You must install cFolders as an add-on on the SAP Web Application Server.

Optional Components

SAP R/3 4.6C or Higher

You can use SAP R/3 to create object links to business objects, such as documents, material masters, or purchase order items.

System Requirements for Transactions CFI01 and CFE01

(Documents Only):

- SAP R/3 4.6C or higher (back-end system)

System Requirements for Transactions CFI02 and CFE02**(Documents, Materials, and Bills of Material):**

- SAP R/3 Release 4.6C SP33 or a higher back-end system. See SAP Note 546617.
- SAP R/3 Plug-In 2002.2



SAP recommends that you use transactions CFI01 and CFE01 only if your system does not fulfill the requirements for transactions CFI02 and CFE02.

System Requirements for Transactions CFI03 and CFE03**(Documents, Materials, Bills of Material, and IPPE Objects):**

- SAP IS-ERP 2005



Some functions such as the Reference Designator or BAdI CFX_BI_EXPORT are only available as of PI 2004.1.

For the Reference Designator, see SAP Notes 844461 and 817588, which are available as of 4.70.

SAP recommends using transactions CFI01 and CFE01 only if your system does not fulfill the requirements for transactions CFI02 and CFE02.

For backend intergration of manufacturer part numbers (MPNs), you require SAP ERP 6.0 as of Enhancement Pack 3, Business Function *cFolders Import Export of MPN* (PLM_CFO_IMPEXPMPN).

R/3 Plug-In 2004.1 SP01

You must install an R/3 plug-in on the R/3 system. If the SAP system is older than SAP ERP 6.0, this is mandatory.

BI Content 7.03

You can use BI Content in SAP NetWeaver 7.0 as of BI Content Add-On 3 (7.0.3) SP06 for additional evaluations. BI Content contains predefined evaluations and reports.

SAP Content Server

You can use the SAP Content Server for storing documents. It must correspond to interface version 0045 or 0046; SAP recommends that you use version 0046.

If no SAP Content Server is available, documents are stored on SAP Web AS 7.00.

ECL Viewer 5.1.2

You can use ECL Viewer 5.1.2 for visualizing documents within cFolders.



Version 3.11 and older versions are not supported.

To download the new ECL Viewer 5.1.2 from the SAP Service Marketplace, perform the following steps:

1. Go to `service.sap.com/plm`.
2. Choose *Life Cycle Data Management* → *Integration* → *Visualization of Product Knowledge* → *Media Center*.
3. Download the ECL Viewer zip file to your local hard drive (click on the *document download* icon with the secondary mouse button).
4. Open the zip file and run the `Setup.exe` file. Close all other applications before starting the application.

TREX 7.0

You can use TREX 7.0 for full text search functions.

Business Package

You can use cFolders within the **Business Package for Project Portfolio Management and Design Collaboration (PPMDC) 4.5**.

Installation Steps

Host B

No.	Action [Corresponding Documentation]	Remarks and Subsequent Steps [Corresponding Documentation]
1	Install SAP NetWeaver 7.0 [Guide: <i>Installation Guide on SAP Service Marketplace at service.sap.com/instguides</i> → <i>SAP NetWeaver</i> → <i>SAP NetWeaver 7.0 (2004s)</i>]	Installing the required languages [Guide: <i>Language Transport, (BC-CTS-LAN)</i>]
2	Install cFolders as part of cProject Suite 4.5	For using cFolders only
3	Optional: Install SAP Content Server for cFolders on host B	

Back-End Systems:

Optional: SAP Business Intelligence

No	Action [Corresponding Documentation]	Remarks and Subsequent Steps [Corresponding Documentation]
1	Install SAP BI 7.0.3	/
2	Install BI Content 7.0.3 Add-On	/
3	Install SAP ECC 6.0	Only relevant for reports about SAP ERP data

Optional: SAP ERP

No	Action [Corresponding Documentation]	Remarks and Subsequent Steps [Corresponding Documentation]
1	Install ECC 6.0	-
2	Optional: Install SAP Content Server on ERP System Host	-

Optional: Host A

No	Action [Corresponding Documentation]	Remarks and Subsequent Steps [Corresponding Documentation]
1	Install SAP NetWeaver 7.0 [Guide: <i>Installation Guide</i> on SAP Service Marketplace at service.sap.com/instguides → <i>SAP NetWeaver</i> → <i>SAP NetWeaver 7.0 (2004s)</i>]	Installing the required languages [Guide: <i>Language Transport, (BC-CTS-LAN)</i>]
2	Install cProject Suite 4.5	-

Installation Variant B**Mandatory Components****SAP NetWeaver 7.0**

Do not install SAP NetWeaver 7.0 on Windows NT 4.0. For more information about the released platforms, see SAP Service Marketplace at service.sap.com/platforms.

SAP ECC 6.00

ECC 6.00 is installed as an add-on on SAP NetWeaver 7.0.

cFolders

cFolders is an add-on that can be installed on SAP ECC 6.00.

Optional Components**System Requirements for Transactions CFI03 and CFE03**

(Documents, Materials, Bills of Material, and IPPE Objects):

- SAP IS-ERP 2005



Some functions such as the Reference Designator or BAdI CFX_BI_EXPORT are only available as of PI 2004.1.

For the Reference Designator, see SAP Notes **844461** and **817588**, which are available as of 4.70.

R/3 Plug-In 2004.1 SP01

You must install an R/3 plug-in on the R/3 system. If the SAP system is older than ERP 2005, this is mandatory.

BI Content

You can use BI Content in SAP NetWeaver 7.0 as of BI Content Add-On 3 (7.03) SP06 for additional evaluations. BI Content contains predefined evaluations and reports.

SAP Content Server

You can use the SAP Content Server for storing documents. It must correspond to interface version 0045 or 0046; SAP recommends that you use version 0046.

If no SAP Content Server is available, documents are stored on SAP Web AS 6.40.

ECL Viewer 5.1.2

You can use ECL Viewer 5.1.2 for visualizing documents within cFolders.



Version 3.11 and older versions are not supported.

To download the new ECL Viewer 5.1.2 from the SAP Service Marketplace, perform the following steps:

1. Go to **service.sap.com/plm**.
2. Choose *Life Cycle Data Management* → *Integration* → *Visualization of Product Knowledge* → *Media Center*.
3. Download the ECL Viewer zip file to your local hard drive (click on the *document download* icon with the secondary mouse button).
4. Open the zip file and run the Setup.exe file. Close all other applications before starting the application.

TREX 7.0

You can use TREX 7.0 for full text search functions.

Business Package for PPMDC

You can use cFolders within the *Business Package for Projects, Portfolio Management, and Design Collaboration (PPMDC) 4.5*.

Installation Steps

Optional: Host A

No.	Action [Corresponding Documentation]	Remarks and Subsequent Steps [Corresponding Documentation]
1	Install SAP NetWeaver 7.0. [Guide: <i>Installation Guide</i> on SAP Service Marketplace at service.sap.com/instguides → SAP NetWeaver → SAP NetWeaver 7.0 (2004s)]	Installing the required languages [Guide: <i>Language Transport</i> , (BC-CTS-LAN)]
2	Install SAP ECC 6.0.	/
3	Install cFolders 4.5.	For using cFolders
4	Optional: Install SAP Content Server for cFolders.	/

Configuration

For information on how to configure cFolders, see the *SAP Solution Manager*.

Process name:

Organizational Area → *Product Development and Introduction* → *Development Collaboration*

Configuration element:

SAP PLM → *SAP cProject Suite 4.50* → *Basic Settings for cFolders*

Upgrade

For upgrade information, see the Upgrade Master Guide on *SAP Service Marketplace* at service.sap.com/instguides.

Software Components Overview

This section provides additional information about the most important software components of *cFolders*.

SAP Components

Application Components

SAP NetWeaver Portal

SAP NetWeaver Portal enables users to collaborate effectively over the Internet on any given task at any time and from anywhere by integrating information, applications, and services.

SAP NetWeaver Portal integrates portal platform technology and portal content in a single product. It also provides employees and external stakeholders – such as customers,

suppliers, business partners, and investors – with central, secure, and role-based access to personalized information, applications, and services through a single point of entry.

SAP NetWeaver Portal reflects the different requirements of various target communities that a company wants to address and allows each company to implement its own portal at its own pace.

SAP NetWeaver Portal comprises the following key functional areas:

Functional Area	Description
Unification	<p>Unification uses SAP-patented unification technology that enables users to Drag&Relate™ information from disparate sources to help them solve business problems.</p> <p>Unification offers end-to-end operational transparency and decision-making support – from being alerted, to getting the right information to make appropriate decisions, to having access to the applications and acting accordingly.</p>
iViews	<p>iViews are predefined portal components that provide access to enterprise applications, structured databases, knowledge management systems, and Web content.</p> <p>Developers can customize and create portal components using both Java and Microsoft .Net technology.</p>
Business packages	<p>Business packages are pre-configured collections of portal content, designed to serve specific roles within the enterprise.</p> <p>They deliver ready-to-use solutions that minimize time to deployment, streamline common processes, and return immediate productivity gains.</p>
Integrated knowledge management	<p>Integrated knowledge management turns unstructured information into available and usable organizational knowledge.</p> <p>It also provides advanced categorization and search capabilities, collaborative functionality, alerting and notification, and an open framework for accessing existing enterprise repositories.</p>
One-step business intelligence integration	<p>One-step integration with SAP Business Intelligence combines data warehousing, reporting and analysis, business performance management, and predefined business content to help companies make more knowledgeable business decisions.</p>

Knowledge Management

Knowledge Management (KM) supports content management and collaboration in the SAP NetWeaver Portal environment.

Knowledge Management comprises the following main components:

Component	Description
Content Management (CM)	<p>CM provides functions and services to manage content by offering users a central point of entry to access and manipulate content stored in distributed and heterogeneous repositories.</p> <p>CM functions enable users to perform basic operations on documents like navigation, editing, property assignment, versioning, and access control.</p> <p>CM services provide features such as subscriptions, approval workflow and XML or time-dependent publishing.</p>
Collaboration	<p>Collaboration provides additional tools to access data.</p> <p>Features like feedback, rating, and discussions allow cooperation between persons working at different times and in different locations.</p>

SAP Business Intelligence (BI)

SAP BW is an analysis tool that gathers and refines information from internal and external sources containing:

- Customizable reporting tools from any perspective
- Predefined information models, reports, analyses, and key performance indicators

You can use SAP BW as an optional software component for all SAP PLM key capabilities to:

- Create reports and replicate them to the different users working offline using the middleware mechanisms.
The SAP analysis is replicated as Microsoft Excel spreadsheets and is available in the Mobile Client in the Reports component.
- Evaluate the sales and distribution data from PLM Marketing (E-Selling scenario).
- Perform effective telemarketing campaign analysis (*Interaction Center*).

SAP ECC Instance

The product SAP ERP 2005 – SAP ECC instance (SAP ERP Central Component) consists of the product version SAP ECC 6.0. This is the central component of SAP ERP 2005 and is the successor component of SAP ECC 5.0, and thus the successor of the former SAP R/3 releases.

The SAP ERP 2005 – SAP ECC instance and the installed SAP ECC 6.0 system are based on usage type SAP NetWeaver 7.0 - AS ABAP, which includes the technical component SAP Web Application Server ABAP 7.00.



Former Industry Solutions add-ons are integrated into SAP ERP 2005 – SAP ECC instance. For more information, see SAP Note 838002 (Add-ons (non-IS) integrated into SAP ECC 600) or SAP Note 838003 (Industry Add-Ons integrated into SAP ECC 600).

Technology Components

SAP NetWeaver 7.0

cFolders is installed on SAP NetWeaver 7.0 Usage Type Application Server ABAP (AS ABAP) as an add-on. AS ABAP is the application platform of SAP NetWeaver and SAP Business Suite. It provides the technological foundation for all other SAP components.

AS ABAP also provides a platform for developing and deploying dynamic and collaborative Web applications or other thin-client applications (WAP, PDA, and so on) and includes all proven SAP programming models and technologies. With AS ABAP, SAP supports open Internet standards, including protocols such as HTTP, HTTPS, and SMTP, as well as Internet document standards, such as HTML and XML.

OLTP SAP System

OLTP system stands for Online Transaction Processing System (SAP System). It is connected to the PLM Server as a back-end system and provides additional business functionalities, such as Materials Management and Financials.

Instance SAP NW-KW Content Server

SAP Content Server is a separate server instance that is used to store documents or other types of content related to SAP applications. With the accompanying cache server, content can be cached if your company operates on several locations. This reduces the load of the wide area network when working with documents.



For more information, see SAP Service Marketplace at service.sap.com/contentserver.

References

List of referenced documentation for cFolders.

Title	Location
Several network and infrastructure documents	SAP Service Marketplace at service.sap.com/ti
SAP NetWeaver 7.0	SAP Service Marketplace at service.sap.com/instguides → SAP NetWeaver
Language Transport	SAP Service Marketplace at service.sap.com/instguides → SAP NetWeaver 7.0 (2004s) → Operations → Cross-NW

SAP ERP	SAP Service Marketplace at service.sap.com/instguides → SAP Business Suite Solutions → SAP ERP
SAP NetWeaver Technical Operations Manual	SAP Service Marketplace at service.sap.com/instguides → SAP NetWeaver 7.0 (2004s) → Operations → Cross-NW
SAP Content Server Installation Guide (Optional)	SAP Service Marketplace at service.sap.com/instguides → SAP NetWeaver → Release 04s → Installation → SAP KW
Installation Guide EP 7.0	SAP Service Marketplace at service.sap.com/instguides → SAP NetWeaver → Release 04s → SAP EP
Business Package for Project Portfolio Management and Design Collaboration (PPMDC) 4.5 (Optional)	SAP Help Portal at help.sap.com